



**HUMMINGBIRDS AI**

# GuacamoleID

USER MANUAL

GuacamoleID APP V2.2

Copyright © 2022

# Table of Contents

<b>1. Installation Process</b>	<b>3</b>
1.1 Technical requirements	3
1.2 Installation process for the GuacamoleID App	3
<b>2. Function and utilization of GuacamoleID</b>	<b>4</b>
2.1 Initial Setup	4
2.2 Main Menu	6
2.2.1 Pause GuacamoleID	7
2.2.2 Exit	8
2.3 Create a user	8
2.4 List of Users	9
2.5 Settings	9
2.5.1 General Settings	10
2.5.1.1 GuacamoleID Virtual Camera	10
2.5.1.2 System Tray	11
2.5.1.3 Debug	11
2.5.1.4 Restore Factory Settings	12
2.5.2 Camera Settings	12
2.5.2.1 Change Camera	12
2.5.3 Security Settings	13
2.5.3.1 Authentication Mode	13
2.5.3.2 Application Sensitivity	15
2.5.3.3 Locking Policy	16
2.5.3.4 Facial Recognition Threshold	16
2.5.3.5 Lowlight Mode	17
<b>3 GuacamoleID App FAQ</b>	<b>17</b>

# 1. Installation Process

## 1.1 Technical requirements

### User PC

To run GuacamoleID App smoothly the minimum requirements are a computer or a laptop with at least:

- 8 GB RAM
- Eighth-generation Intel Core i5 or it's equivalent
- 500 MB of storage
- Windows 10 or 11 operating system
- An account with administrator access
- A webcam capable of 720p video

## 1.2 Installation process for the GuacamoleID App

To install the GuacamoleID App, make sure to follow the steps below.

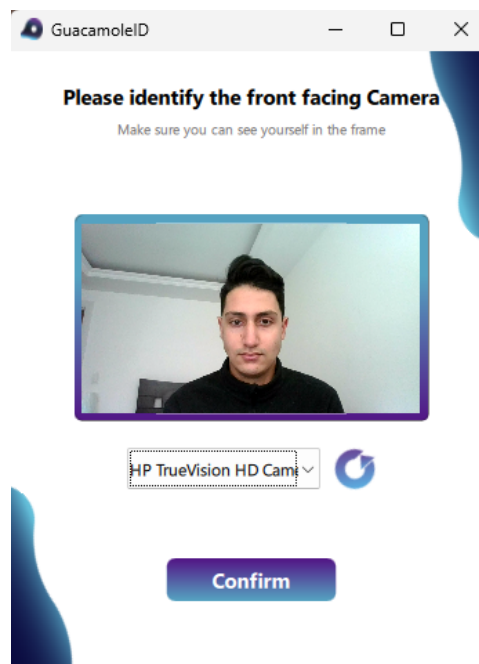
- 1) Download the GuacamoleID installer from the provided link.
- 2) Go to the downloads folder on your device, search for the GuacamoleID installer, and double-click on it.
- 3) A Windows pop-up will request administrator access, click on the Yes button.
- 4) Select the language you want to use during the installation, and click on the Accept button to continue with the process.
- 5) The installer will ask for a license key, fill out the license field, and click on the Next Button.
- 6) Read and accept the license agreement.
- 7) Click on the Install button to continue with the process.

- 8) After finishing the installation process, the app should start automatically. If the user wants to reopen the app at another time, double-click on the Guacamole icon on your desktop.

## 2. Function and utilization of GuacamoleID

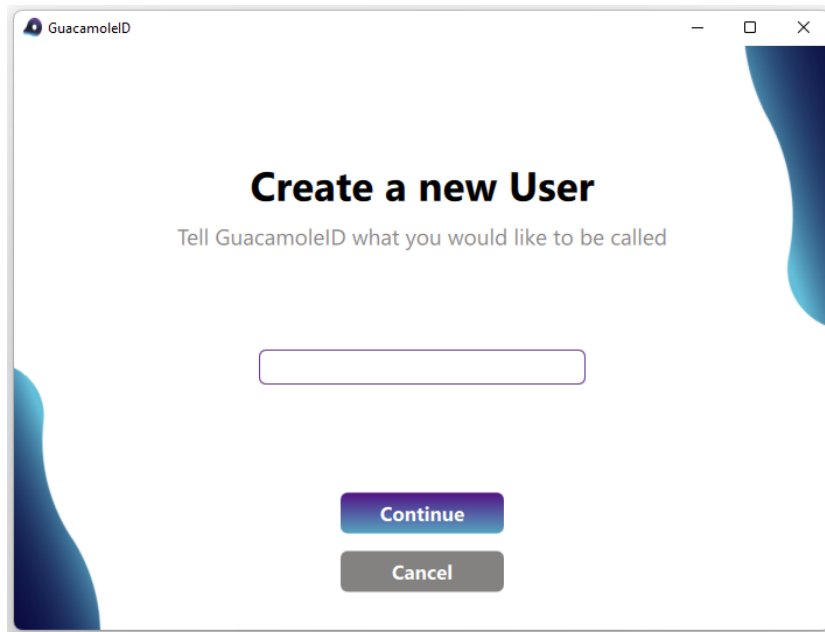
### 2.1 Initial Setup

- 1) To start the application, double-click on the GuacamoleID icon on your desktop.
- 2) Read and accept the user agreement.
- 3) Before continuing, please make sure no other applications are using the computer's webcam.
- 4) Select the front-facing camera you want to use from the camera list. You should be able to see yourself in the video box.

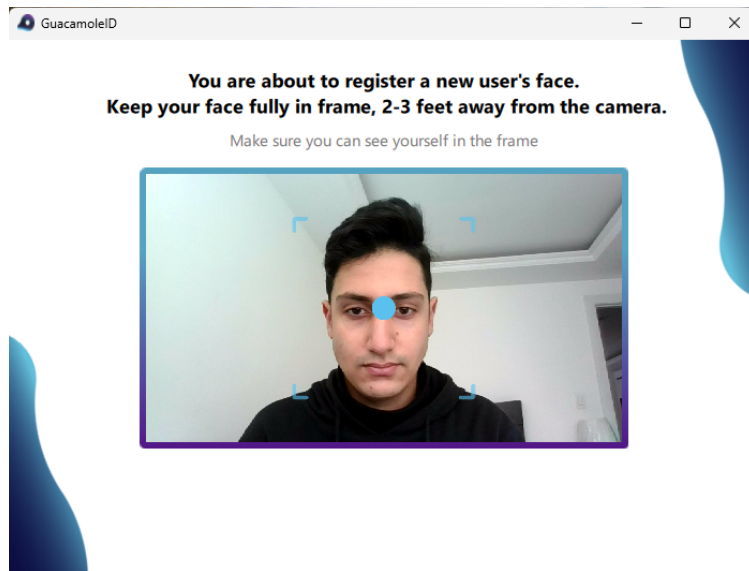


To add a new camera and see it in the list of cameras, or if the camera you selected is not working correctly, click on the Refresh Cameras button.

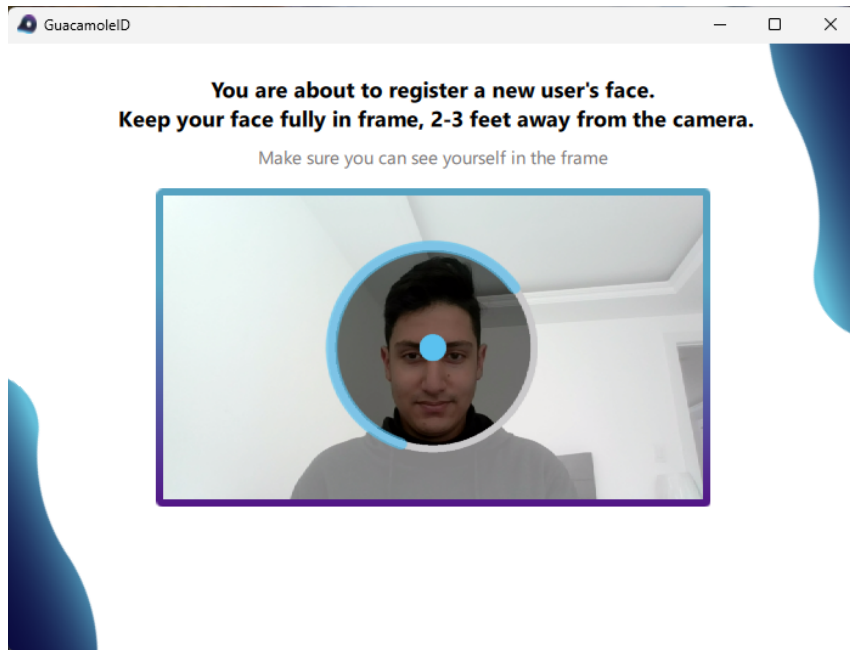
- 5) Create a NEW username (your first name or a nickname) and continue. If you enter an existing username, the app will overwrite the old biometric data.



- 6) You are about to start the Face Registration process. Keep your face centered 2-3 feet away from the camera. Please note that no other faces should be visible in the box during the face registration process.



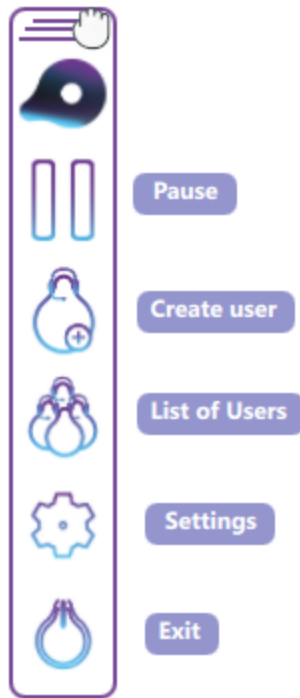
- 7) Look towards the camera, and position your head in the center of the frame. Once you are in the proper position, a circle will appear. Keep your head still until the circle is filled in. Sometimes you need to move your face closer or farther away from the camera for optimal positioning.



- 8) Once the face registration process is complete the main menu will pop up on the left-hand side of the screen.

## 2.2 Main Menu

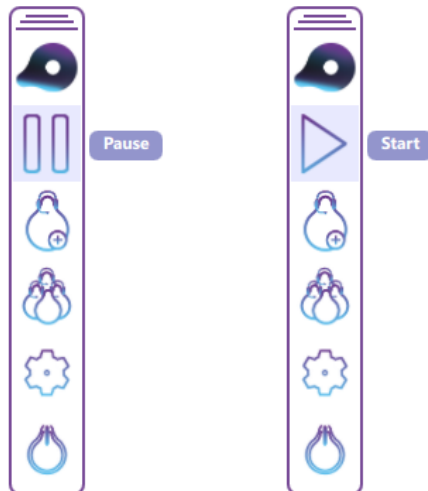
The main menu allows you to access the key settings and control the GuacamoleID application. You can move the main menu by grabbing the top of the window.



### 2.2.1 Pause GuacamoleID

This pause/start button allows you to stop or start the facial recognition system. If you are having issues accessing your device in a reliable manner you have an option to temporarily pause GuacamoleID.

Note: When the GuacamoleID app is paused, the Guacamole virtual camera is still running and you can use your video conferencing apps, i.e. Zoom, Microsoft Teams, Google Meet, and Webex.



### 2.2.2 Exit

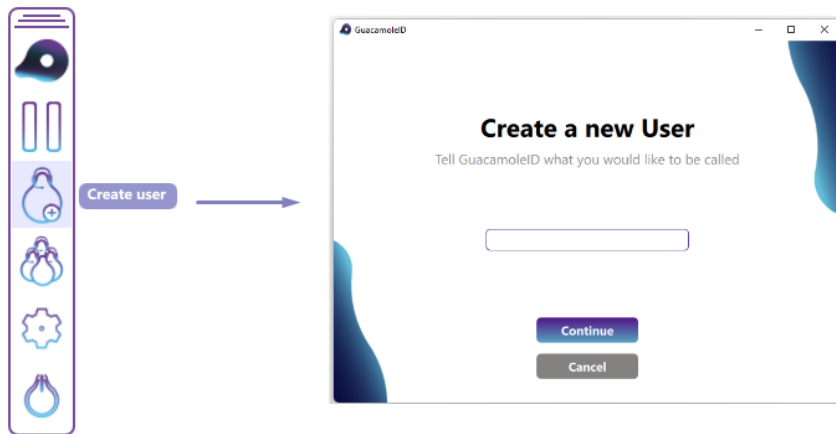
The Exit button allows you to close GuacamoleID entirely. You can run the application again by clicking the shortcut on the desktop.



### 2.3 Create a user

In addition to yourself, which you registered in the initial setup, you may need to add additional trusted users that are allowed to use your terminal. To do so:

- 1) Enter a name for the new user, and click on the Confirm button.



- 2) Click on the Continue button to start the face registration process, the new user's face should go inside the square and 2-3 feet away from the camera. From here



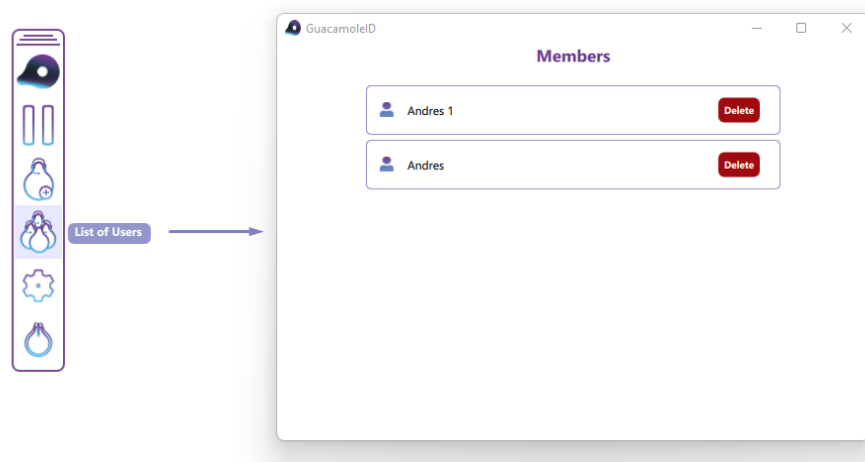
until the end of the registration, the process continues the same as the Face registration process that the primary user followed.

- 3) Once finished with the face registration process, the new username should appear in the List of Users Window, which is opened by clicking the Users List Button in the Main Menu.

**Note:** You can register your face multiple times on the GuacamoleID app and we recommend updating your face registration every couple of months or after significant changes to your facial features.

## 2.4 List of Users

In the User List Window, you can see which users are registered in the GuacamoleID app. Also, you can delete users. Keep in mind that the application needs at least one user to function.



## 2.5 Settings

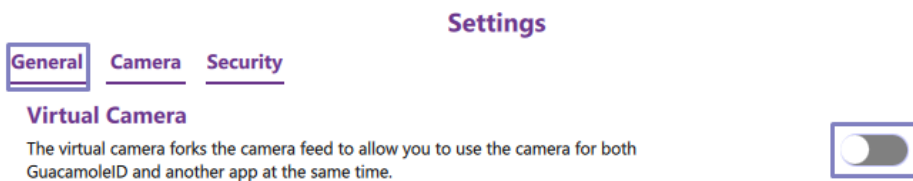
This window allows the user to restore the application data, change the password, access the camera configuration, turn on/off the GuacamoleID virtual camera, active and deactivate the system tray minimization and debugging functionality, and return to the main menu; make sure to go to the Configuration Menu section to learn more about this Menu.

## 2.5.1 General Settings

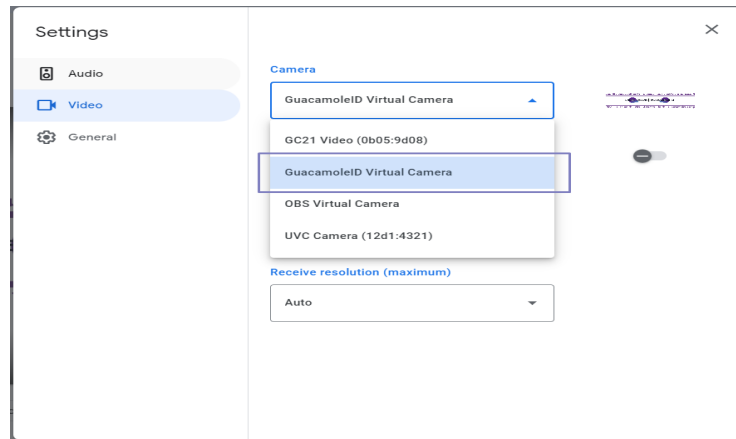
### 2.5.1.1 GuacamoleID Virtual Camera

GuacamoleID is compatible with all major video conferencing solutions, such as Zoom, Google Meet, Microsoft Teams, and Webex. To use the front-facing camera in a meeting while running the application, follow the upcoming steps.

- 1) Make sure to be on the General Configuration section, and turn on the 'Virtual Camera' switch button.



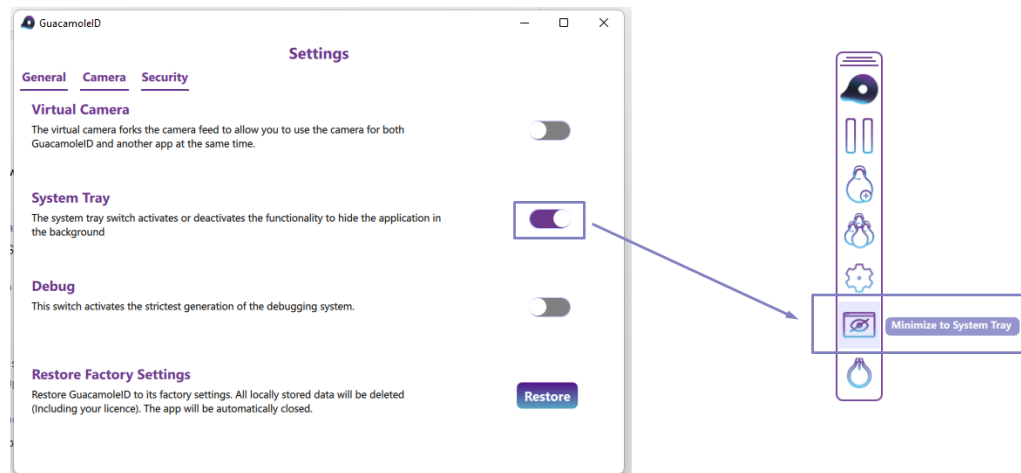
- 2) Once this function is activated, go to the camera settings for Google Meet, Zoom, or Microsoft Teams section to set the GuacamoleID virtual camera for the meetings. If the virtual camera doesn't appear in the list of available cameras, close all the tabs on the browser and restart the browser.



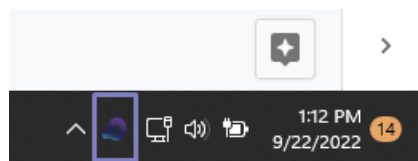
If the user wishes to deactivate the GuacamoleID Virtual Camera, click again on the 'virtual camera' switch button.

### 2.5.1.2 System Tray

The System Tray Switch shows or hides a button in the main menu, called “Minimize to System Tray”, which has the functionality of doing the application work in the background without a graphical interface. Also when the application starts, if this functionality is activated the application will run in the background.



If you want to run the app in the background, click on the Minimize to System tray button. Which hides the GuacamoleID’s graphical interface and the GuacamoleID’s icon will appear on the right side of the windows taskbar. To show the main menu, click on the GuacamoleID icon which will activate the user interface showing the main menu of the application.



### 2.5.1.3 Debug

This function should only be activated if instructed by the developers. Its purpose is to help Hummingbirds AI address any bug that may arise down the road.

## Debug

This switch activates the strictest generation of the debugging system.



### 2.5.1.4 Restore Factory Settings

By restoring the application to the factory settings all locally stored data including your license will be deleted. Follow these steps:

- 1) On the general section in settings, click on the Restore button.

#### Restore Factory Settings

Restore GuacamoleID to its factory settings. All locally stored data will be deleted (Including your licence). The app will be automatically closed.



- 2) A popup is going to appear to confirm that you want to restore the application, click on the Confirm button, and the application will automatically close.

Are you sure you want to restore  
GuacamoleID to factory settings?  
This action can not be undone.

Confirm

Cancel

### 2.5.2 Camera Settings

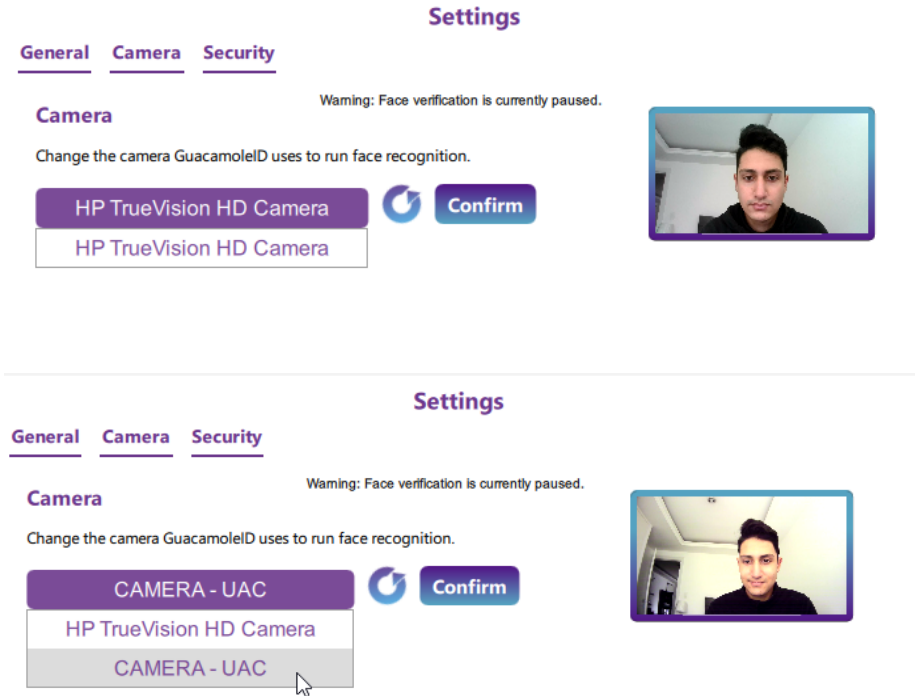
In the Camera settings section, you will find all the configuration options related to the camera that GuacamoleID will use.

#### 2.5.2.1 Change Camera

GuacamoleID performs optimally when the camera is directly facing you. If you have two or more cameras, to change the camera you have to select the available cameras that are in the dropdown. If the camera isn't in the

dropdown, try to use the refresh button. When you have selected the camera you want to use, click on the Confirm button.

The camera settings automatically pause the facial recognition system to ensure that the app doesn't accidentally block you. Make sure to close the Settings window when you're done.



### 2.5.3 Security Settings

The Security Settings section has all the functions of GuacamoleID that make the application more secure, or more flexible, depending on the entity's security requirements.

#### 2.5.3.1 Authentication Mode

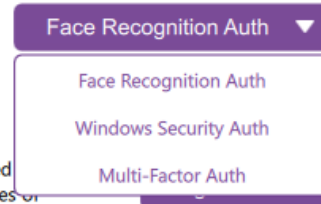
The main objective of the authentication modes is to protect GuacamoleID from being used by unauthorized users. GuacamoleID has 3 ways to protect itself from unauthorized use, which are Face Recognition Authentication, Windows Security Authentication, and Multi-Factor Authentication:

## Settings

General Camera Security

### Authentication Mode

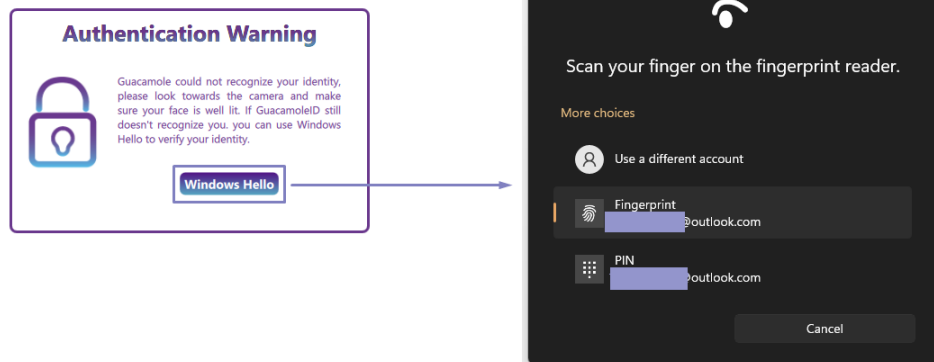
The main objective of the authentication modes is to protect GuacamoleID from being used by unauthorized users. Choose one of the following modes depending on your security requirements.



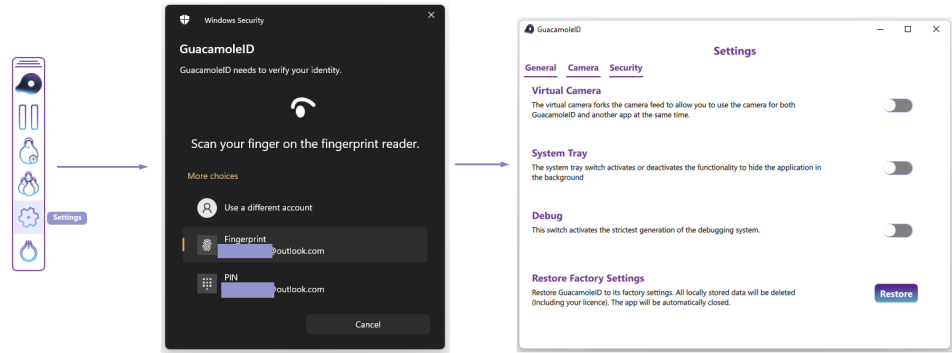
### Application Sensitivity

Application Sensitivity allows you to control the sensitivity of the alerts triggered by the continuous re-identification System by increasing/decreasing response times on

- 1) **Face Recognition Authentication (the most convenient option):** If this mode is chosen, the application will automatically verify the identity of the person using the GuacamoleID's Face Recognition, when you want to perform an action in the application. If the application cannot recognize your identity, a popup will appear in which you will have the option to verify your identity with the Windows Hello Authentication method.



- 2) **Windows Security Authentication:** if this mode is chosen, the application will use Windows Hello Authentication to verify the identity of the person who is trying to use the application. Choosing this mode does not mean that the face Recognition monitoring system is deactivated.



**3) Multi-Factor Authentication (the most secure option):** if this mode is chosen, the application will use GuacamoleID Face Recognition Algorithm, plus the Windows Hello Authentication to authenticate the person who is trying to use the application or make a change to the application. This mode is the safest since the person who is using the device needs to be registered in the application, and have the credentials of the device.

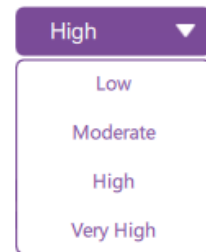
### 2.5.3.2 Application Sensitivity

The application sensitivity changes the AI's response time. The lower the sensitivity, the more time the app waits to block the computer. The app will block the computer if it detects an intruder looking at the computer screen, or if it doesn't detect an authorized user looking at the screen for a certain period of time. There are 4 possible values for this setting:

Sensitivity value	Intruder response time	Absence response time
Low	15 seconds	60 seconds
Moderate	5 seconds	30 seconds
High	3 seconds	10 seconds
Very High	3 seconds	3 seconds

### Application Sensitivity

The Application Sensitivity allows you to increase or decrease GuacamoleID's response times. A higher sensitivity will allow GuacamoleID to block your computer quicker.



A dropdown menu with a purple header containing the text 'High' and a downward arrow. Below the header, the menu is open, showing five options: 'Low', 'Moderate', 'High', and 'Very High'.

**Note:** The Very High sensitivity is suitable for demoing the application.

### 2.5.3.3 Locking Policy

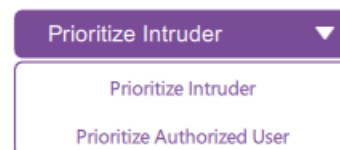
The locking policy allows the user to change the application's locking behavior:

- 1) Prioritize Intruders:** It will lock the screen whenever there is at least one intruder detected in the scene. This option protects the computer against shoulder surfing, such as in airports and coffee shops.
- 2) Prioritize Authorized User:** It will keep the screen unlocked whenever there is at least one authorized user in the scene. This option disables shoulder-surfing protection and is suitable for when the user works in trusted environments.

### Locking policy

-Prioritize Intruders: Will lock the screen whenever there is at least one intruder detected in the scene. Protects the computer from shoulder surfing.

-Prioritize Authorized User: Will keep the screen unlocked whenever



A dropdown menu with a purple header containing the text 'Prioritize Intruder' and a downward arrow. Below the header, the menu is open, showing two options: 'Prioritize Intruder' and 'Prioritize Authorized User'.

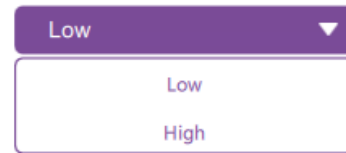
### 2.5.3.4 Facial Recognition Threshold

This setting allows you to increase or decrease GuacamoleID's facial recognition threshold. It sets a minimum similarity to the user's stored facial biometrics. A higher threshold provides increased security. A lower threshold might improve performance in low lighting conditions and can allow the app to unlock your computer easier.



### Facial Recognition Threshold

This setting allows you to increase or reduce GuacamoleID's rigidity with facial recognition. A higher threshold provides increased security. A lower threshold might improve accuracy in difficult lighting conditions.



A dropdown menu with a purple header containing the word "Low" and a downward arrow. Below the header is a white box with a purple border containing the words "Low" and "High" stacked vertically.

### 2.5.3.5 Low Light Mode

This setting enables the system to automatically apply a different AI approach (*low light mode*) that has been designed to be better adapted to low light conditions whenever the system detects that the illumination conditions of the scenario are not optimal. When the *low light mode* is enabled, GuacamoleID will lower its sensitivity to reduce the probability of the system triggering a blocking effect that may result in an annoying behavior for the user. It will also adjust the computer's screen brightness to make the user visible if it is in front of the screen. The shoulder suring protection is automatically turned off during the low light mode.

### Low Light Mode

The low light mode allows GuacamoleID to change its behavior in low light conditions. GuacamoleID will lower its sensitivity to reduce the probability that the system will block you. It will also manipulate the computer's screen brightness to try to illuminate your face.



A dropdown menu with a purple header containing the word "On" and a downward arrow.

## 3. GuacamoleID App FAQ

- **What does the GuacamoleID application do?**

GuacamoleID secures and extends your authenticated sessions by using an AI-based facial recognition system that ensures only you and your trusted contacts have access to your system and data. As soon as the user steps away from the computer, the screen and access will be blocked until the user comes back and without the need for passwords, the system is available again. You no longer need to keep locking and unlocking your device every time you step away for a short time. The application can also detect intruders looking at your device (shoulder surfing) and if enabled, it blocks your screen to preserve your privacy.

- **How can I make sure the biometrics will be safe?**

As a privacy-first company, we take privacy very seriously and we apply this to all our products. There is no video recording or storage by the GuacamoleID application. The biometric data of users' faces are encrypted and stored locally. No data, including no videos, is generated nor transmitted to the cloud, and Hummingbirds AI doesn't have access to the users' biometrics data.

- **What are the scenarios in which the user's PC gets locked?**

There are four scenarios in which the user's PC gets locked:

- If it detects an unauthorized face.
- If it can't recognize the authorized face for a certain period of time.
- If the authorized user leaves their laptops.
- If the employer decides to block an employee.

- **What happens to the current legacy Identity and Access management (IAM) system we're using?**

The department or organization, and the employees continue using their legacy IAM system. The only change is to extend the "Sleep Time" to a couple of hours. At the beginning of the working shift, the user continues using the legacy system (password, 2FA, MFA) and once logged in, the GuacamoleID application takes over and continuously authenticates the user.



**HUMMINGBIRDS AI**